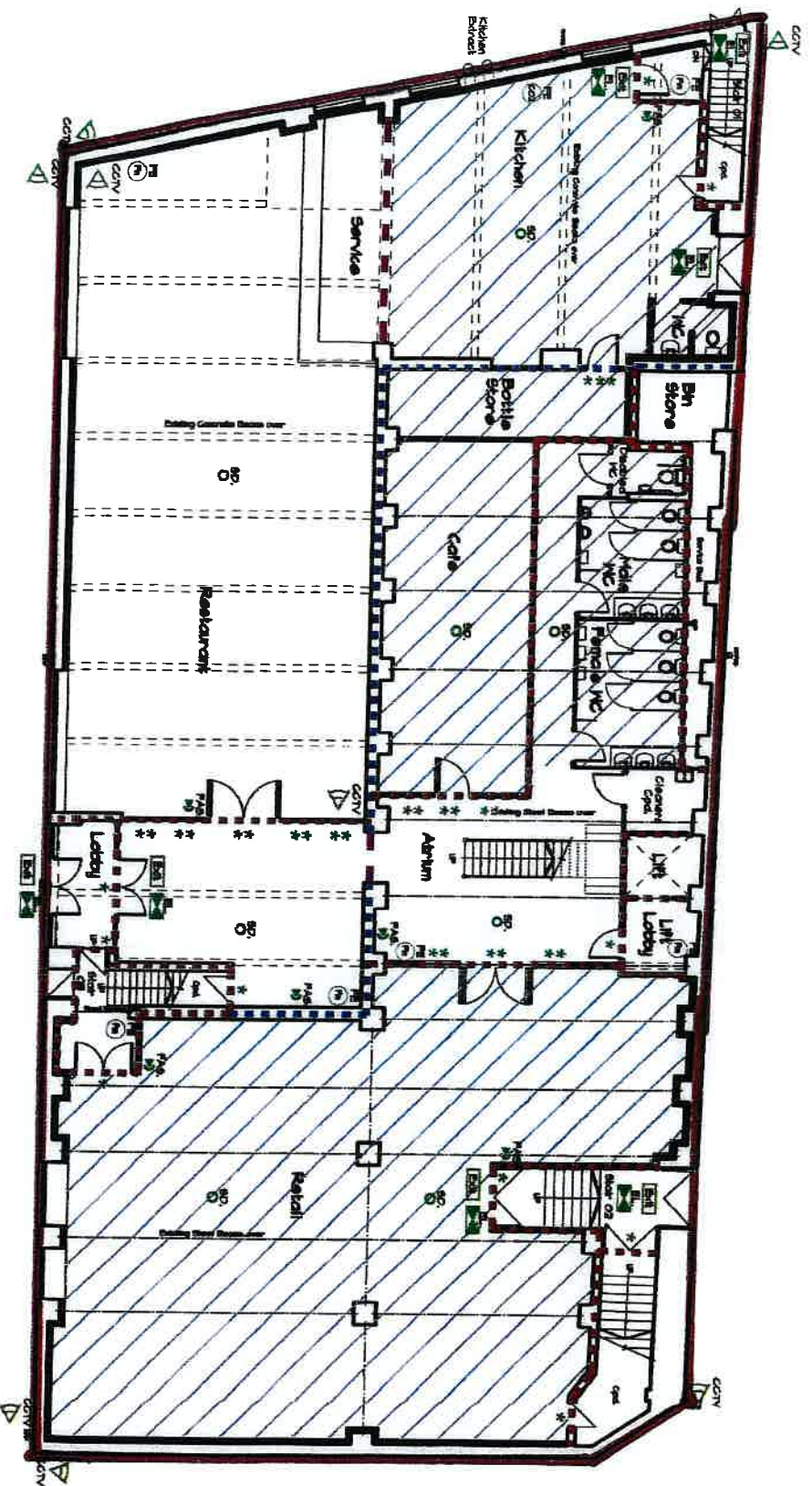
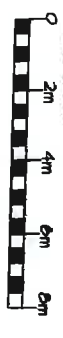


APPENDIX 2



GROUND FLOOR PLAN
Scale 1/200

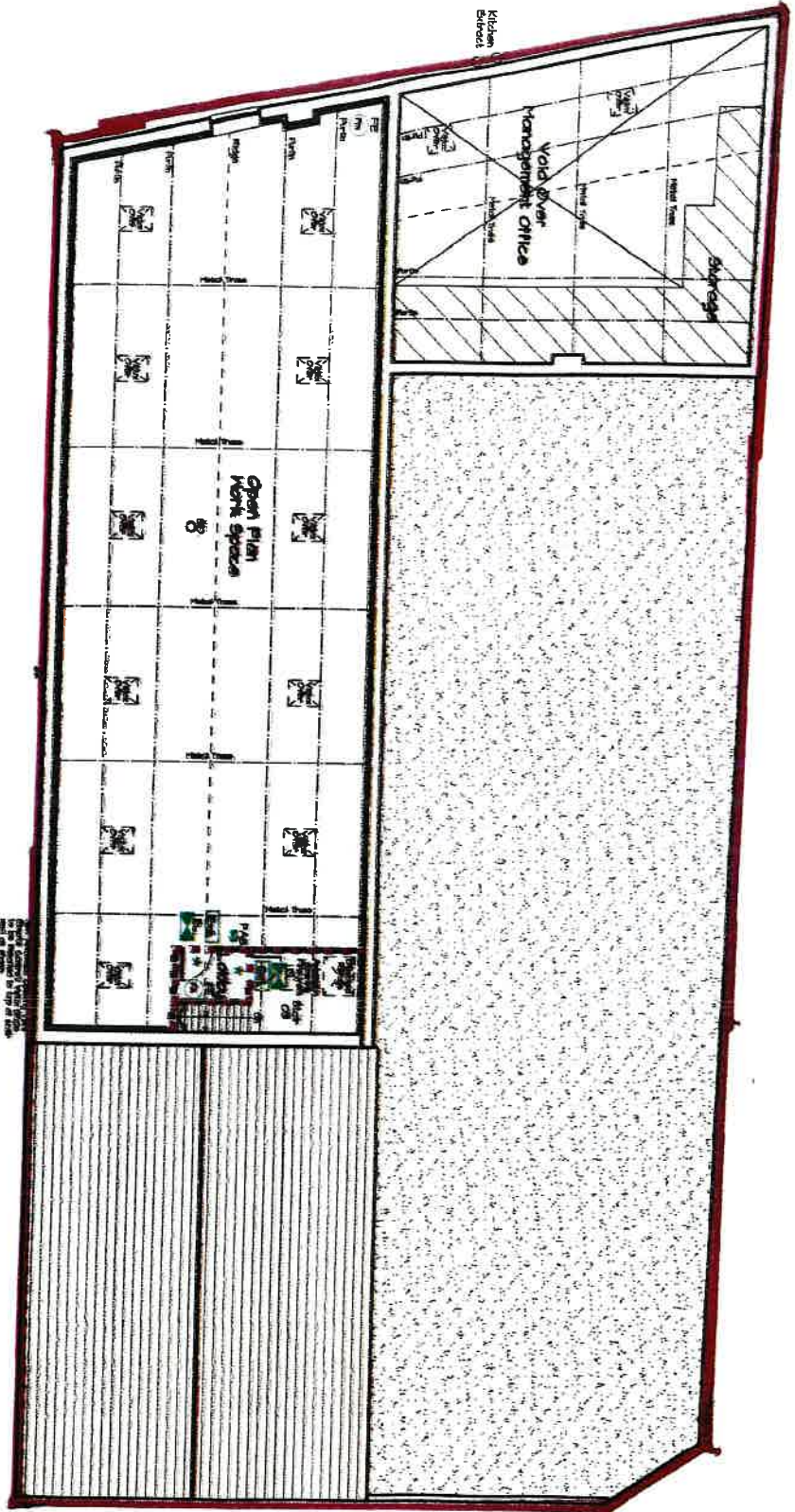


FIRE STRATEGY

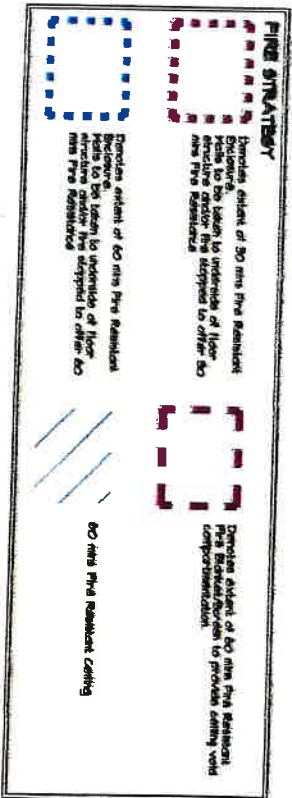
- Denotes extent of 60 mins Fire Resistant Doors
- Denotes extent of 60 mins Fire Resistant Walls to be taken to underside of floor structure under fire stopped to other 60 mins Fire Resistant
- Denotes extent of 60 mins Fire Resistant Walls to be taken to underside of floor structure under fire stopped to other 60 mins Fire Resistant
- Denotes extent of 60 mins Fire Resistant Fire Doors/Windows to provide ceiling void compartmentation.
- 60 mins Fire Resistant Ceiling

FIRE STRATEGY

- Denotes Fire Resistant Door with self closing device.
- Denotes 750mm Fire Resistant glazed Door and Windows
- Denotes Fire Resistant Door with self closing device.
- All fire doors to include Wilson Perma-Seal SCOM 1 ROOMS from floor level (min 0.6m to ceiling)
- Smoke detector wired independent from and fitted to all detectors to each floor.
- Heat detector wired on independent drive and fitted to all detectors to each floor.
- Emergency Lighting
- Fire Alarm Sounder/Chime.
- Fire Exit Sign.
- Fire Extinguisher - Room
- Fire Extinguisher - Carbon Dioxide
- Clear Glass TV



LOFT FLOOR PLAN
Scale 1:200



- FIRE STRATEGY**
- ☒ Provide 30m Fire Resistant Door with self-closing device.
 - ☒ Provide 60m Fire Resistant closed doors and screens.
 - ☒ Provide 30m Fire Resistant Door with self-closing device.
 - ☒ All fire doors to hold for 30 mins from fire alarm sounding.
 - ☒ Smoke detector wired independent from heat detector wired on independent circuit and linked to all detectors for each floor.
 - ☒ Emergency Lighting.
 - ☒ Fire Alarm Sounder/Chimes.
 - ☒ Fire Exit Sign.
 - ☒ Fire Retardant - Foam
 - ☒ Fire Retardant - Carbon Dioxide
 - ☒ Fire Retardant - Glass doors TV